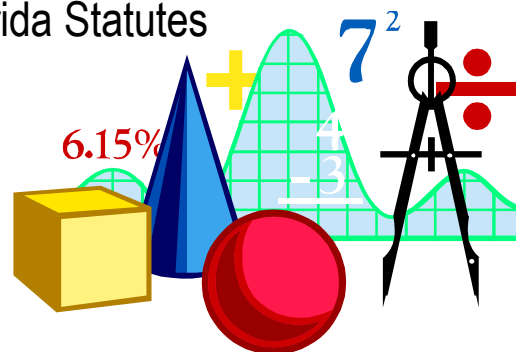




FLORIDA EDUCATION FINANCE PROGRAM (FEFP)

Pursuant to Sections 1011.60 - 1011.685, Florida Statutes



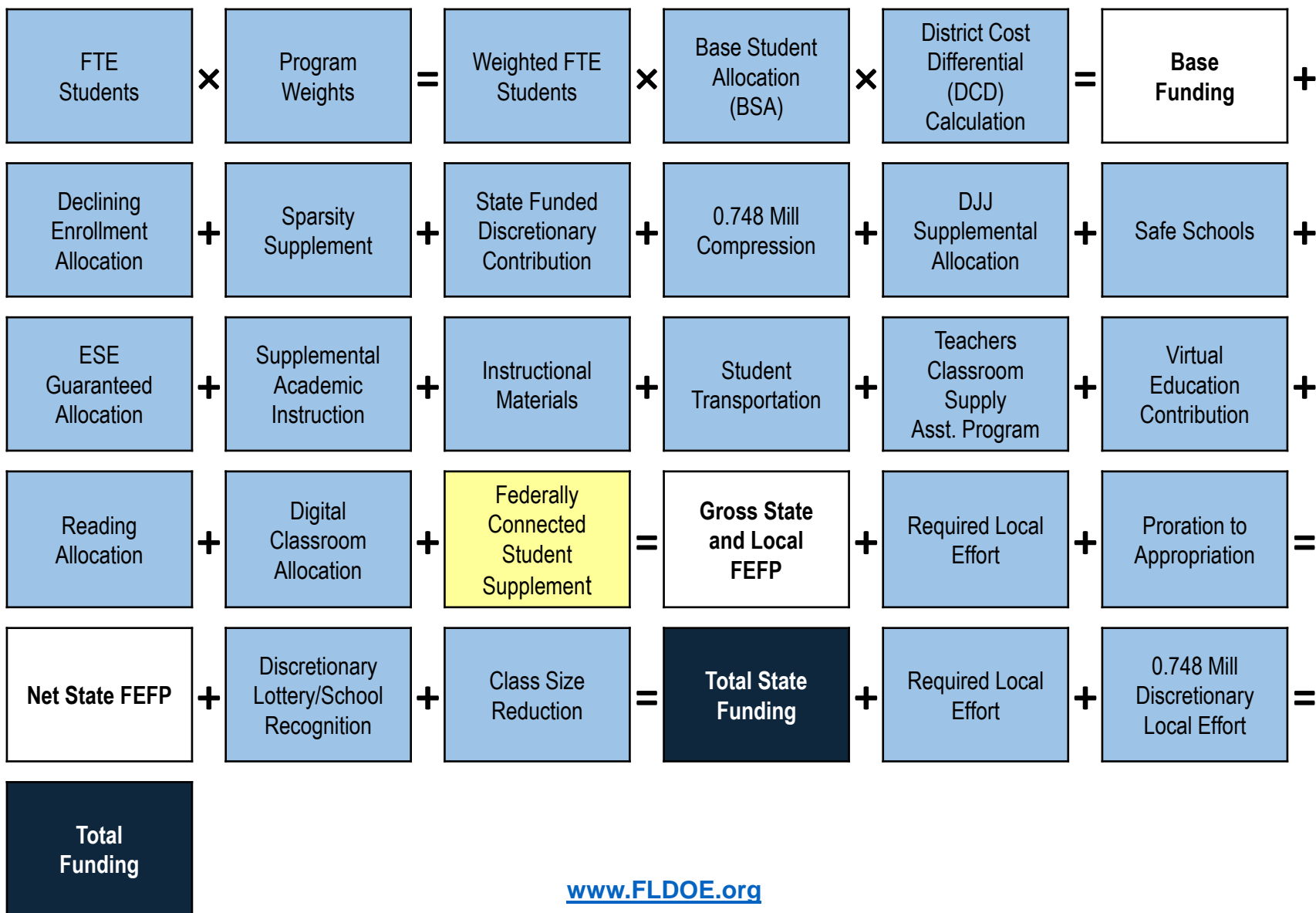
Mark Eggers, *Assistant Deputy Commissioner of Finance and Operations*
Chris Sanchez, *Director of the Office of Funding & Financial Reporting*
Lee Davis, *Supervisor of K-12 Funding*

www.FLDOE.org

FEFP AGENDA

- ❖ FEFP Quick Overview
- ❖ Required Local Effort and School District Tax Roll
- ❖ Digital Classrooms Allocation
- ❖ Add-on FTE
- ❖ Transportation
- ❖ School Recognition/ Discretionary Lottery
- ❖ Federally Connected Student Supplement
- ❖ Class Size Funding, Reduction and Reallocation
- ❖ Proration to Available Funds
- ❖ McKay FTE Reporting and Funding
- ❖ Charter School Funding

2015-16 FEFP Calculation



FTE Reporting Deadlines: 2015-16

Survey 1

Survey Week: July 6-10, 2015

Due Date: July 24, 2015

State Processing: July 20-September 11, 2015

Final Update/Amendment: September 30, 2015

Survey 2

Survey Week: October 12-16, 2015

Due Date: October 30, 2015

State Processing: October 19-November 13, 2015

Final Update/Amendment: March 31, 2016

Survey 3

Survey Week: February 8-12, 2016

Due Date: February 26, 2016

State Processing: February 15-March 11, 2016

Final Update/Amendment: July 31, 2016

Survey 4

Survey Week: June 13-17, 2016

Due Date: July 5, 2016

State Processing: June 27-July 15, 2016

Final Update/Amendment: August 31, 2016

All FTE Reporting Deadlines can be viewed

at: <http://fldoe.org/core/fileparse.php/7507/urlt/0075812-ftesurveydates.pdf>

FEFP Calculations

Calculation	When	Data Source	
Conference Report	Legislative Session	Survey 1 – Projection Survey 2 – Projection Survey 3 – Projection	Survey 4 – Projection Survey 5 – Prior Year Est.
2 nd Calculation	July – Upon receipt of Tax Roll	Survey 1 – Projection Survey 2 – Projection Survey 3 – Projection	Survey 4 – Projection Survey 5 – Prior Year Est.
3 rd Calculation	Upon receipt of Survey 2	Survey 1 – Actual Survey 2 – Actual Survey 3 – Estimate	Survey 4 – Estimate Survey 5 – Prior Year Act.
4 th Calculation	Upon receipt of Survey 3	Survey 1 – Actual Survey 2 – Actual Survey 3 – Actual	Survey 4 – Estimate Survey 5 – Prior Year Act.
Final Calculation	After Final Update of Survey 4	Survey 1 – Actual Survey 2 – Actual Survey 3 – Actual	Survey 4 – Actual Survey 5 – Prior Year Act.

FEFP Component Updates Throughout Calculations

FEFP Component	First Calculation	Second Calculation	Third Calculation	Fourth Calculation	Final Calculation
Base FEFP Funding	X	-	X	X	X
Declining Enrollment Supplement	X	-	X	X	X
Sparsity Supplement	X	X	X	X	X
State Funded Discretionary Contribution	X	X	X	X	X
.748 Mills Discretionary Compression	X	X	X	X	X
DJJ Supplemental Allocation	X	-	X	X	X
Safe Schools Allocation	X	-	X	X	X
ESE Guaranteed Allocation	X	-	-	-	-
Supplemental Academic Instruction	X	-	-	-	-
Instructional Materials	X	-	X	X	X
Student Transportation	X	-	X	X	X
Teachers Classroom Supply Assistance	X	-	-	-	-
Reading Allocation	X	-	X	X	X
Virtual Education Contribution	X	X	X	X	X
Digital Classrooms Allocation	X	-	X	X	X
Federally Connected Student Supplement	X	-	-	-	-
Class Size Reduction Allocation	X	-	X	-	-
Discretionary Lottery Funds	X	-	X	X	X
School Recognition Funds	X	-	-	X	-

**An X indicates that the component is updated or changes during the indicated calculation.*

2015-16 Program Cost Factors (PCF) & Base Funding

<i>Basic Programs</i>	<i>Grade Levels</i>	<i>Cost Factor</i>
101	K-3	1.115
102	4-8	1.000
103	9-12	1.005
<i>ESE Programs</i>	<i>Grade Levels</i>	<i>Cost Factor</i>
111	K-3	1.115
112	4-8	1.000
113	9-12	1.005
254	K-12	3.613
255	K-12	5.258
<i>ESOL (ELL)</i>	<i>Grade Levels</i>	<i>Cost Factor</i>
130	K-12	1.180
<i>Career Education</i>	<i>Grade Levels</i>	<i>Cost Factor</i>
300	9-12	1.005

$$\text{UFTE} * \text{PCF} = \text{WFTE}$$

**2015-16 Base Student Allocation
(BSA) = \$4,154.45**

$$\text{WFTE} \times \text{BSA} \times \text{DCD} = \text{Base Funding}$$

Digital Classrooms

- **Plans:** for plan requirements please contact Cali Stringer in the Division of Technology and Innovation at cali.stringer@fldoe.org
- For the 2015-16 fiscal year, digital classrooms plans were due by October 1st.
- Funds will be released as plans are approved.

Add-On FTE

Additional Weighted FTE is provided for the following programs:

- Advanced Placement (AP) Scores
 - Scores of 3 or higher generate 0.16 FTE
- International Baccalaureate (IB) Scores
 - Scores of 4 or higher = 0.16 FTE Diploma = 0.30 FTE
- Advanced International Certificate of Education (AICE)
 - Scores of E or higher = 0.16 FTE Diploma = 0.30 FTE
- Industry Certified Career and Professional Academy (CAPE)
 - Industry Certifications generate between 0.10 and 0.20 FTE
 - Digital Tool Certifications generate 0.025 FTE
 - Innovation Certifications generate 0.3 FTE
 - Acceleration Certifications generate between 0.5 and 1.0 FTE
- Isolated Schools Supplement
- Small District ESE Supplement
- Unpaid High School Credits: 0.50 and 0.25 FTE for early graduation

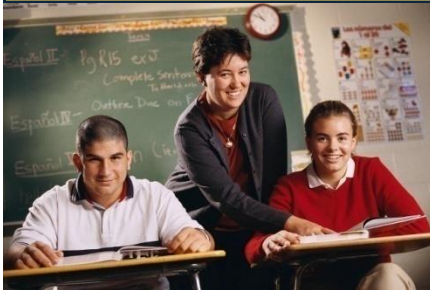
Survey 5

- **2013-14 Survey 5 used in 2015-16 First and Second FEFP Calculations.**
- **2014-15 Survey 5 used in 2015-16 Third-Final FEFP Calculations.**
- **2014-15 Survey 5 Dates:**
 - Due date: July 31, 2015
 - State Processing: July 27 – August 28, 2015
 - Final Update/Amendment Date: February 26, 2016
- **Data in the system as of the close of Survey 2 State Processing (November 13, 2015) will be used in the 2015-16 FEFP Third Calculation.**

Supplemental Academic Instruction

Supplemental
Academic
Instruction

Authority:
s. 1011.62(1)(f),
F.S.



Provides \$648,910,576 for Supplemental Academic Instruction (SAI).

At least \$75 million, together with the funds from the Reading Allocation, shall be used by districts with 1 or more of the 300 lowest performing elementary schools based on the state reading assessment to provide an additional hour of intensive reading instruction beyond the school day.

The SAI allocation is not recalculated during the school year.

Reading Allocation

Reading Allocation

Authority:
s. 1011.62(9),
F.S.



Provides \$130,000,000 for a K-12 comprehensive, district-wide system of research-based reading instruction.

Each district receives a minimum of \$115,000.

At least \$75 million, together with the funds from the SAI Allocation, shall be used to provide an additional hour of intensive reading instruction for students in the 300 lowest performing elementary schools based on the state reading assessment.

300 Lowest Performing Schools

300 Lowest Performing Schools

Authority:
s. 1011.62(1)(f)2.,
F.S.



Funding provided in SAI and Reading Allocations to provide districts with 1 or more of the 300 lowest performing elementary schools based on the state reading assessment funds to provide an additional hour of intensive reading instruction beyond the school day.

For 2015-16, the list of the 300 lowest performing schools remain the same as in 2014-15. Schools servicing grades 4-8 should be operating for a minimum of 1080 hours, while schools servicing grades PK-3 should operate for a minimum of 900 hours.

Expenditure survey is due to the department no later than August, 2016 for the 2015-16 school year.

School Transportation Funding

School
Transportation

Authority:
s. 1011.68,
F.S.



Eligibility

1. 2 miles or More from school
2. ESE Student whose IEP requires transportation
3. Teen Parent
4. Hazardous Walking (K-6 elementary only)

Base Riders: All riders that meet the eligibility requirements listed above. Includes weighted riders.

Weighted riders: all ESE riders that require special transportation services on their IEP (example: Aides, wheelchair lift),

School Transportation Funding

School
Transportation

Authority:
s. 1011.68,
F.S.



Adjusted Base/Weighted Riders: Riders that have been adjusted by the term length they were served out of 180 days (most students served 90 days per semester and would receive 0.5 in survey 2 and 0.5 in survey 3).

Other Adjustments / Allocation Factors:

1. Average Bus Occupancy Index (ABO)
2. Rurality Index
3. Florida Price Level Index (FPLI)
4. 1.8 factor applied to weighted ESE students

ESE Transportation Allocation: weighted allocation factor multiplied by legislative ESE allocation.

Base Transportation Allocation: Remaining Allocation based on base allocation factor

Transportation Reporting Deadlines: 2015-16

Survey 1

Survey Week: July 6-10, 2015

Due Date: July 24, 2015

State Processing: July 20-September 11, 2015

Final Update/Amendment: September 30, 2015

Survey 2

Survey Week: October 12-16, 2015

Due Date: October 30, 2015

State Processing: October 19-November 13, 2015

Final Update/Amendment: March 31, 2016

Survey 3

Survey Week: February 8-12, 2016

Due Date: February 26, 2016

State Processing: February 15-March 11, 2016

Final Update/Amendment: July 31, 2016

Survey 4

Survey Week: June 13-17, 2016

Due Date: July 5, 2016

State Processing: June 27-July 15, 2016

Final Update/Amendment: August 31, 2016

Transportation Calculations

Calculation	When	Data Source
Conference Report 1 st Trans Calc.	Legislative Session	Survey 1 – Prior Year Survey 4 – 2 years prior Survey 2 – Prior Year Survey 3 – Prior Year
2 nd FEFP Calc. 1 st Trans Calc	July – Upon receipt of Tax Roll	Survey 1 – Prior Year Survey 4 – Prior Year Survey 2 – Prior Year Survey 3 – Prior Year
3 rd FEFP Calc 2 nd Trans Calc	Upon receipt of Survey 2	Survey 1 – Actual Survey 4 – Prior Year Survey 2 – Actual Survey 3 – Survey 2 Figures
4 th FEFP Calc 3 rd Trans Calc	Upon receipt of Survey 3	Survey 1 – Actual Survey 4 – Prior Year Survey 2 – Actual Survey 3 – Actual
Final FEFP Calc Final Trans Calc	After Final Update of Survey 4	Survey 1 – Actual Survey 4 – Actual Survey 2 – Actual Survey 3 – Actual

**All Transportation Reporting Deadlines can be viewed
at: <http://www.fldoe.org/core/fileparse.php/7507/urlt/0075812-ftesurveydates.pdf>**

Transportation Survey 2 Reporting Timeline

Oct 12-16 Survey week: All reported data should be based on ridership during this time period.

Survey 2 data reported by November 14 is incorporated into payments between January and April

Nov 13 End of state processing: All Survey 2 Data should be reported accurately by this date.

Survey 2 and 3 Data reported by end of March 13th is incorporated into remaining FEFP payments between April and June



Funding Timeline: Fiscal impact related to when survey 2 and 3 amendments are made.

Survey 2 or 3 amendments reported after March 13 will not be part of current year payments.

March 31 Final Amendment Window: amendments cannot be made after this time.

Data amendments to survey 3 cannot be reported after July 31

School Recognition/Lottery

The total appropriation is \$134,582,877.

Funds are provided for two programs:

1. First, funds are provided for the **School Recognition Program** to reward schools for academic achievement. Allocations are based on up to \$100 per student in eligible schools.
2. The balance is provided for **Discretionary Lottery** to be used for enhancement by each school district. Funds are allocated on the district's share of base FEFP funding. School Advisory Councils receive up to \$5 per FTE student.

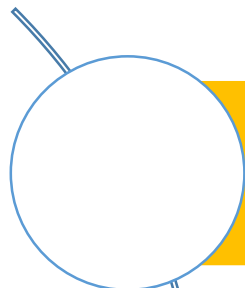




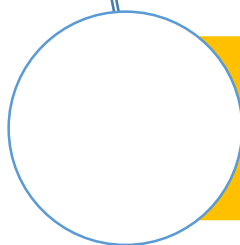
School Recognition



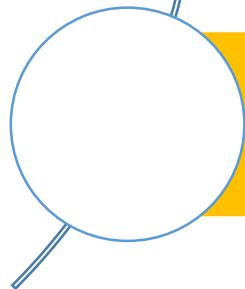
Schools may qualify for school recognition in the following ways:



Schools that sustain high performance by receiving a **school grade of "A,"** or



Schools that demonstrate exemplary improvement due to innovation and effort by **improving at least one letter grade;** or



Schools that **improve more than one letter grade and sustain the improvement the following school year**

School Recognition



School staff and the school advisory council must reach an agreement on how to spend the funds by February 1st or the funds must be equally distributed to all classroom teachers.

Estimating your School Recognition Allocation:



Federally Connected Supplement

Federally
Connected
Student Supplement

Authority:
s. 1011.62(13),
F.S.



For students connected with federally owned military installations, National Aeronautics and Space Administration (NASA) property, and Indian lands.

Must be eligible for federal Impact Aid Program funds under s. 8003 of Title VIII of the Elementary and Secondary Education Act of 1965.

Exempt Property Allocation: Capital Outlay Millage rate applied to value of exempt property.

Student Allocation: All qualifying students receive 3% of the BSA (\$125). Qualifying students with disabilities receive an additional 10.5% of the BSA (\$436).

Class Size Compliance

Class Size Compliance

- Measured at the:
 - Individual classroom level for Traditional Public Schools
 - School wide average for Charter Schools and District-Operated Schools of Choice.
- Measures only core courses.
- Excludes virtual and blended learning courses.
- Class size funding adjustments are made for each student causing each classroom to exceed the class size maximums.
- Funding adjustments for charter schools, district-operated schools of choice and traditional public schools are made independent of each other.
- Section 1003.03(3), F.S., provides acceptable methods for meeting class size requirements.

Memorandums

School Class Sizes & Process and Time Line for Appeals

Calculations of Reductions to Class Size Operating Funds (Prior to Appeals)

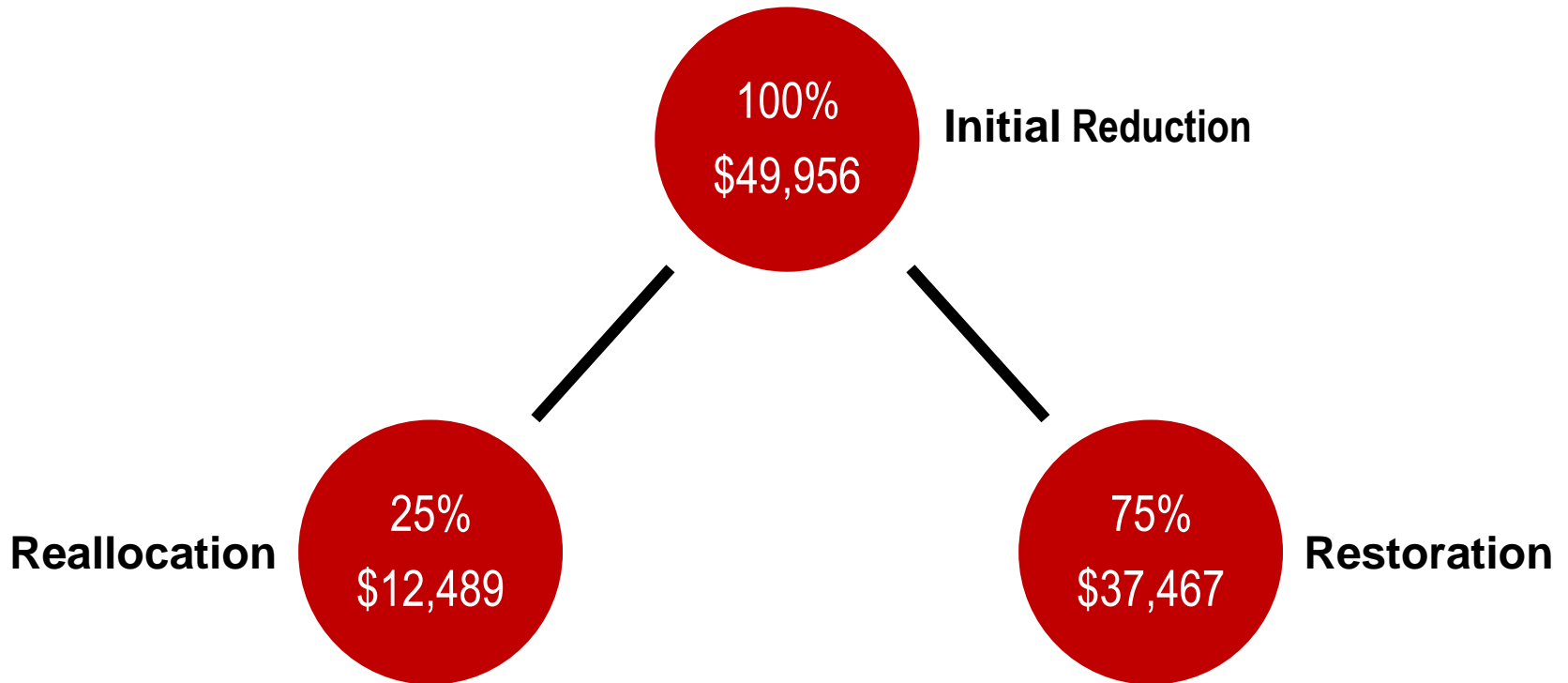
Class Size Categorical Allocation, Recommendation for an Alternate Reduction

Class Size Operating Categorical Reallocation and Restoration Calculations

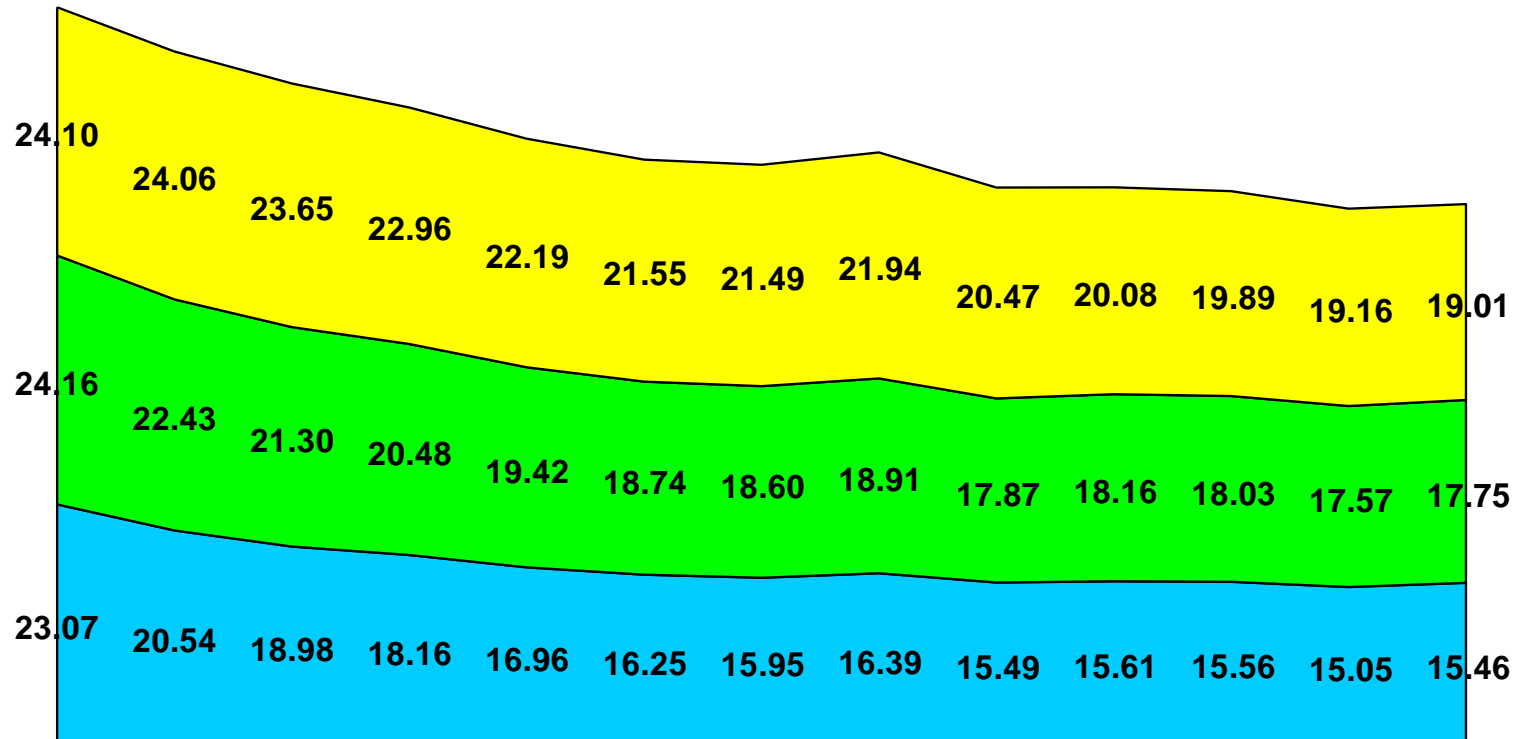
Class Size Compliance

- Class Size Compliance Plan
 - Plans for meeting compliance by October of 2016
 - Due to DOE by February 1st
 - Required for inclusion in the Restoration Calculation
- Reallocation to districts in compliance:
 - Up to 5% of the Base Student Allocation multiplied by the district's total number of students
 - Not to exceed 25% of total funds reduced
- Restoration to districts that submit a compliance plan by February 1:
 - Balance of funds remaining, which is 75% of the calculated reduction
- *The Commissioner is authorized to withhold the distribution of the class size categorical allocation to ensure the availability of sufficient undistributed funds to support the implementation of the calculated reduction*

Class Size Compliance



Historical Class Size Averages



	2002-03	2003-04	2004-05	2005-06	2006-07	2007-08	2008-09	2009-10	2010-11	2011-12	2012-13	2013-14	2014-15
Grades 9-12	24.10	24.06	23.65	22.96	22.19	21.55	21.49	21.94	20.47	20.08	19.89	19.16	19.01
Grades 4-8	24.16	22.43	21.30	20.48	19.42	18.74	18.60	18.91	17.87	18.16	18.03	17.57	17.75
Grades PK-3	23.07	20.54	18.98	18.16	16.96	16.25	15.95	16.39	15.49	15.61	15.56	15.05	15.46

Final Class Size Payments

- June 26th payment – the final class size payment will be reduced for districts based on the **initial** reduction to class size with the 75% restoration applied for those who submitted a compliance plan.
- After the Commissioner’s recommendation is approved by the Legislature, any additional funds due to appeals will be paid out, as well as the reallocation for districts who met class size compliance.

Proration to the Appropriation

Proration to the Appropriation

Authority:
s. 1011.62(15),
F.S.



If the funds appropriated for current operation of the FEFP are not sufficient to pay the state requirement in full, the department shall prorate the available state funds to each district.

Each district's reduction to state funding is based on the district's share of total gross state and local funding.

The Proration to the Appropriation can only be a reduction in funds.

Charter School Funding

Charter School FEFP Funding

Authority:
s. 1002.33(17),
F.S.



Students enrolled in a charter school, regardless of the sponsorship, are funded as if they are in a basic program or a special program, the same as students enrolled in other public schools in the school district.

Funding for each charter school is to be recalculated throughout the year based on the most recent FEFP Calculations.

A charter school revenue worksheet is available to assist districts and charter schools in determining the appropriate levels of funding. This worksheet is updated after each FEFP Calculation. <http://www.fldoe.org/fefp/chartinst.asp>

McKay Scholarship Funding

McKay Scholarship Funding

Authority:
s. 1002.39(10),
F.S.



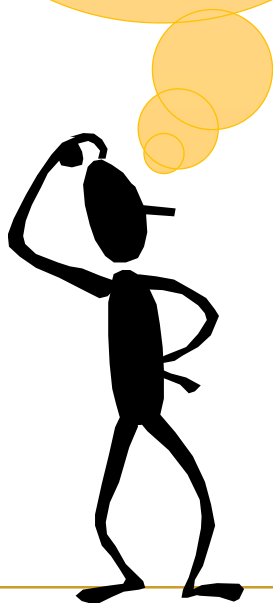
McKay Scholarships are provided to students with disabilities to go towards private school tuition.

McKay Scholarships are funded from the same fund source as the FEFP. Districts report McKay FTE and generate funding based on the FTE they report.

Funds are then reduced from the district's FEFP allocation to pay the actual scholarships.



Questio
ns???



Useful Tools

- FEFP Calculations <http://www.fldoe.org/fefp/offrfefp.asp>
- FTE General Instructions
<http://www.fldoe.org/fefp/fteinstr.asp>
- FTE Reporting Deadlines
<http://www.fldoe.org/core/fileparse.php/7507/urlt/0075812-ftesurveydates.pdf>
- Financial and Program Cost Accounting and Reporting for Florida Schools (Red Book)
<http://www.fldoe.org/fefp/redtoc.asp>
- Class Size <http://www.fldoe.org/classsize/>
- Charter School Revenue Estimating Worksheet
<http://www.fldoe.org/fefp/chartinst.asp>

Contact Information

Office of Funding and Financial Reporting
(850) 245-0405 <http://www.fldoe.org/fefp/>

- Chris Sanchez, Director of Funding & Financial Reporting
chris.sanchez@fldoe.org
- Lee Davis, Funding Supervisor
lee.davis@fldoe.org



www.FLDOE.org



www.FLDOE.org